



# MONTHLY MEMBERSHIP PROGRESS REPORT

District 9 NW

Results as of: 1/31/2017

GMT: Judy Hankom

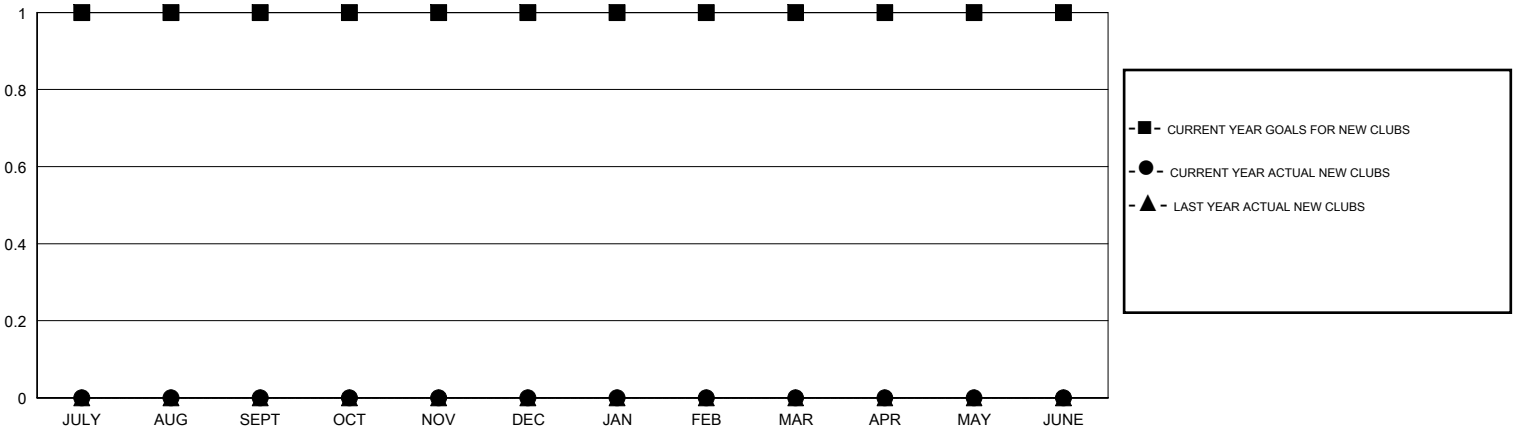
LOCATION IOWA

GMT CA

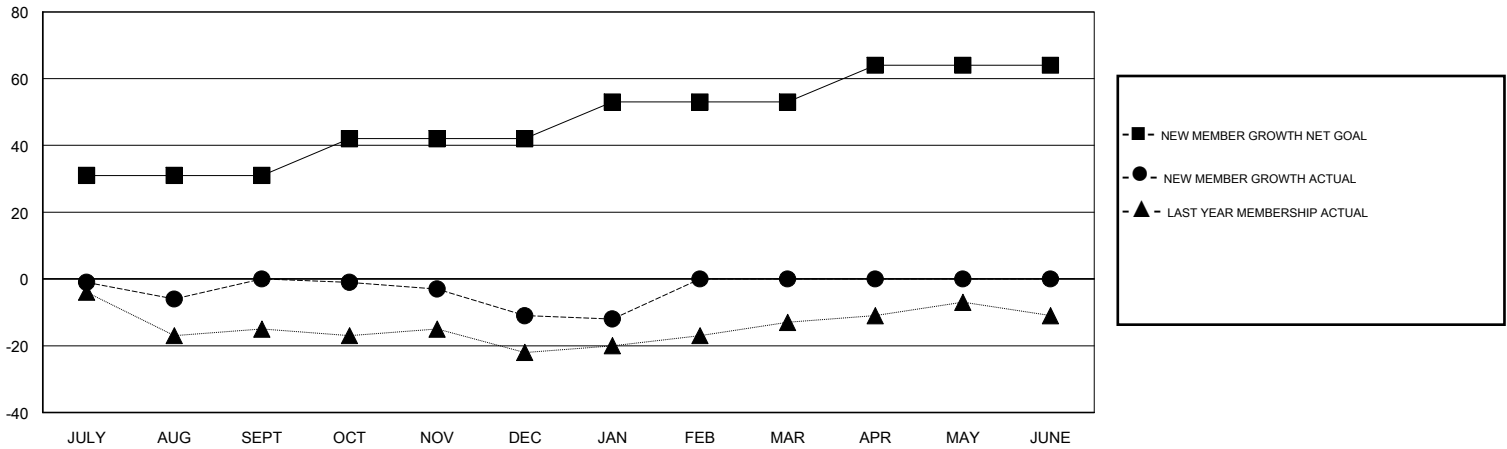
Clubs			
RESULTS FOR 2016-2017			
QUARTER	NEW CLUB GOAL	NEW CLUBS	DROPPED CLUBS
JULY/AUG/SEPT	1	0	0
OCT/NOV/DEC	0	0	1
JAN/FEB/MAR	0	0	0
APR/MAY/JUNE	0	0	0

Members			
RESULTS FOR 2016-2017			
QUARTER	NEW MEMBER GROWTH NET GOAL (not reinstated or transfers)	NEW MEMBER GROWTH ACTUAL (not reinstated or transfers)	DROPPED MEMBERS ACTUAL (including transfers)
JULY/AUG/SEPT	31	20	20
OCT/NOV/DEC	11	12	23
JAN/FEB/MAR	11	7	8
APR/MAY/JUNE	11	0	0

GOALS AND ACTUAL NEW CLUBS CUMULATIVE



GOALS AND ACTUAL MEMBERS CUMULATIVE



DROPPED CLUBS: 1	17 CLUBS OF 44 ADDED 1 OR MORE NEW MEMBERS	<b>GENDER DISTRIBUTION</b>
DROPPED MEMBERS	<a href="#">CLICK HERE FOR CUMULATIVE MEMBERSHIP DATA</a>	MALE 775 (80.81%)
DECEASED 7		FEMALE 184 (19.19%)
CLUB CANCELLED 2		TOTAL FAMILY UNIT MEMBERS 112
OTHER 42		FAMILY MEMBERS PAYING HALF DUES 56
<b>TOTAL 51</b>		